

KOH 40-H High CRI Fixture Guide

Indoor | Suspended | Output up to 2110lm

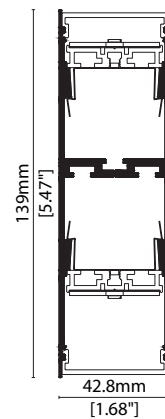


Key applications

- ✓ Ceiling
- ✓ Downlighting
- ✓ Indirect lighting
- ✓ Interior
- ✓ Office lighting
- ✓ Wall grazing

Key features

- ✓ Control Gear
- ✓ Custom lengths
- ✓ Decorative
- ✓ Diffusion: Homogenous
- ✓ Direct view
- ✓ Extensive CCT range
- ✓ High lumen efficacy
- ✓ IP40
- ✓ Lensed



MOUNTING METHODS



KKS-09 Suspension mounting kit



KKS-08 Ceiling rose



KKT-04 Joining bar/suspension kit

KOH 40-H High CRI

Specification sheet



Dimensions	H139/W42.8/L580-1700mm (H5.47/W1.68/L22.83-66.93in)
PCB Cut-point	560/1120/1680mm (22.05/44.09/66.14in)
LED Pitch	-
Chip	k-line
Cover/Optics	Diffused (130°) / Dark Louvre (60°)
CCT	k-line : 1900K/2100K/2300K/2500K/2700K/3000K/3500K/4000K/5000K
LED binning	k-line : 3-step MacAdam Ellipse
CRI	≥ 90
Lifetime	50,000 hours @ 25°C (50,000 hours @ 77°F)
Operating temp	T _a = -20 to 45°C (T _c max = 62.9°C) T _a = -4 to 113°F (T _c max = 145.2°F)
IP Rating	IP40
Finish	Matt Silver/Grey/White/Black/Bronze Powder Coated
Mounting	Suspended via suspension kit
Power feed	Male/female connectors
Control	0-10V/DALI (Integrated Power Supply)

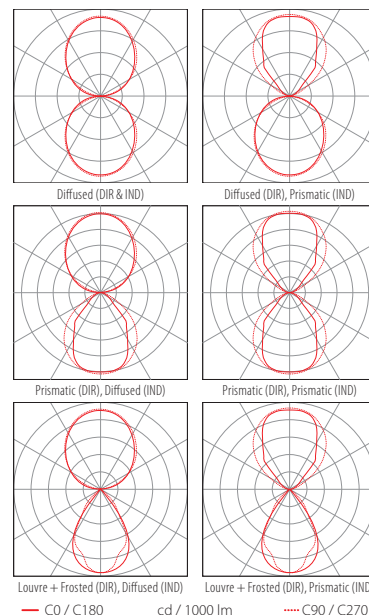
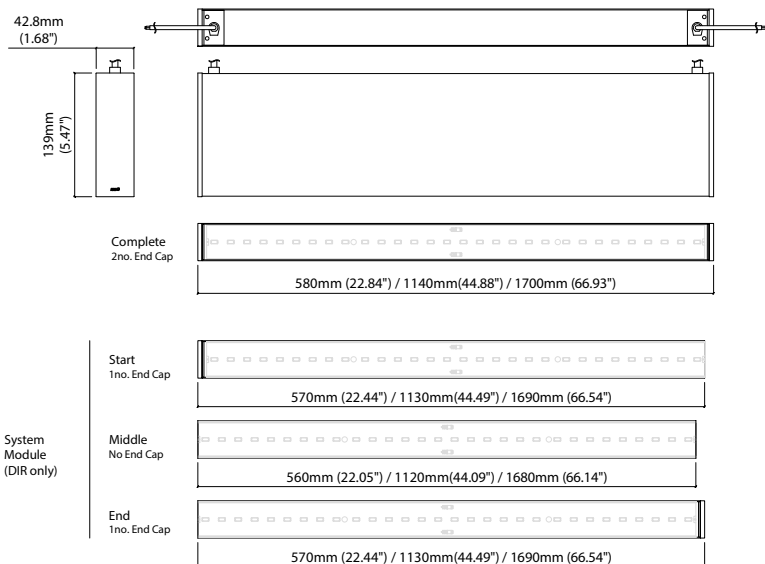


LED Grading Key

Base Grade
k-line
 3-step commercial range
 Energy Star CCTs

Power consumption	Supply voltage	Supply current	Power factor:
IND-16.3W/DIR-17.5W	240V AC 50Hz	0.08A	0.925 @ 239.99V, 50Hz

	Diffused Cover (DIR)	Prismatic Cover (DIR)	Louvre + Frosted Cover (DIR)	Diffused Cover (IND)	Prismatic Cover (IND)	CRI	R9	Rf	Rg
h-line	990lm 56.8lm/W	1170lm 66.9lm/W	480lm 29lm/W	1170lm 66.2lm/W	2110lm 62.9lm/W	93	66	92	99



Data derived from independent UKAS/IESNA LM-79-08 accredited testing of production samples.

KOH 40-H High CRI

Code Table



FIXTURE

Model	Finish	Cover	Grade	LED Type ¹	Colour (CCT)	Length Availability ²	Lens	Module Type*	Control Type	Input									
KOH 40-H (Diffused Indirect)	Matt White Paint	MW	Louvre	T	High CRI	630A	1900K	19	580mm	m	0580	Frosted lens	FL	Complete	FE	0-10V	4	AC 100V	b
	Matt Silver Paint	MS	Diffused	C		2100K	21	1140mm	m	1140	Start	LE	DALI	3	AC 220-240V	d			
KOH 40-H (Prismatic Indirect)	Matt Grey Paint	MG	Prismatic	G	High CRI	630A	2300K	23	1700mm	m	1700	Frosted lens	FL	Middle	XE	No Controller	5	No PSU	I
	Matt Black Paint	MB					2500K	25	22.05in	i	0022			End	RE				
	Bronze Paint	BP					2700K	27	44.09in	i	0044								
	3000K	30					66.14in	i	0066										
	3500K	35																	
4000K	40																		
5000K	50																		

¹ Refer to **LED Grading Key** on **Specification sheet** page

² Refer to **Length Availability List** or enter total run length instead of length code

* Module Type (various fixture lengths)

Complete	FE	
Start	LE	
Middle	XE	
End	RE	

Code Example:

GC	-	MW	-	C	-	k	-	630A	-	30	-	m	-	1140	-	FL	-	FE	-	4	-	d
KOH 40-H (Diffused Indirect)		Matt White Paint		Diffused		k		High CRI		3000K		m		1140mm		Frosted lens		Complete		0-10V		AC 220-240V

ACCESSORIES

Mounting Accessories

KKJT-04	Joining Bar/Suspension kit
KKSW-09	Suspension Mounting Kit
KKSW-08	Ceiling Rose

Connection Accessories

KKCN-26	Power Feed Cable
---------	------------------

* Refer to **Power feed** on **Accessories** pages

PSU/Driver

0-10V/DALI (Integrated Power Supply)

* Refer to **Mounting accessories** on **Accessories** pages

Colour	LED	Lumen/module	Wattage	Spec Doc	Length
Single CCT	630A	2110/module	16.3 (IND)/17.5 (DIR)	KOH 40-H High CRI	560/1120/1680mm (22.05/44.10/66.14in)
	957A	2190/module	31.1 (IND)/33.5 (DIR)	KOH 40-H High Power	560/1120/1680mm (22.05/44.10/66.14in)

* Performance data: (DIR), k-line, Prismatic Cover, 3000K, 580mm module

KOH 40-H High CRI

Length Availability List



KOH 40-H High CRI (IND)

Length Code		Fixture Length ¹		LED Strip ²		End Cap Dimension ³		Wattage (W)	Output (lm)
Metric	Imperial(US)	Metric	Imperial(US)	Metric	Imperial(US)	Metric	Imperial(US)		3000K (Test Data)
m0580	i0023	580mm	22.83in	520mm	22.05in	10mm	0.39in	16.30	1079
m1140	i0045	1140mm	44.88in	1080mm	44.09in	10mm	0.39in	33.80	2238
m1700	i0067	1700mm	66.93in	1640mm	66.14in	10mm	0.39in	51.20	3389

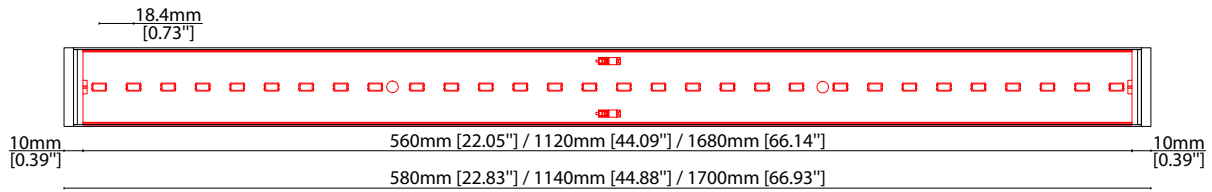
KOH 40-H High CRI (DIR)

Length Code		Fixture Length ¹		LED Strip ²		End Cap Dimension ³		Wattage (W)	Output (lm)
Metric	Imperial(US)	Metric	Imperial(US)	Metric	Imperial(US)	Metric	Imperial(US)		3000K (Test Data)
m0580	i0023	580mm	22.83in	560mm	22.05in	10mm	0.39in	17.50	1171
m1140	i0045	1140mm	44.88in	1120mm	44.09in	10mm	0.39in	35.00	2342
m1700	i0067	1700mm	66.93in	1680mm	66.14in	10mm	0.39in	52.50	3512

¹ Actual total overall length of light fixture (LED strip + end caps + void/wire hole)

² Actual length of PCB strip

³ Actual length of 2x end caps



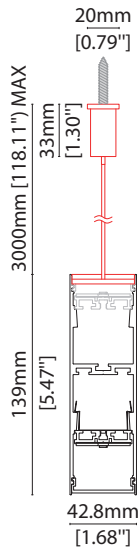
MOUNTING ACCESSORIES

Note: Accessories are to be ordered separately with corresponding code shown below.



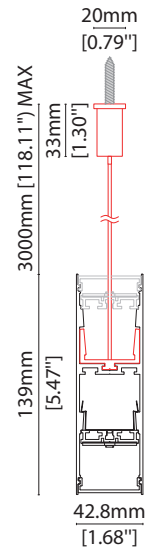
KКСW-09

Suspension mounting kit
(allow 2 per metre/40in)
Aluminium finish
W20/H3000mm
(W0.79/H118.11")



KКJT-04

Joining bar/
Suspension kit
(allow 1 per join)
L120/W42/H3000mm
(L4.72/W1.65/H5.47")



KКСW-08

Ceiling rose
Dia 127mm (5") x H 6.35mm (0.25")
Maximum weight 20kg per/kit

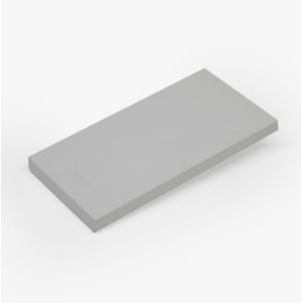
POWER CABLE



KКCN-26

Power Feed Cable

END CAPS AND LIGHT LEAK TAPE



- KKEC-S1 (2no.) - End cap pair (Mat white)
- KKEC-S2 (2no.) - End cap pair (Mat silver)
- KKEC-S3 (2no.) - End cap pair (Mat gray)
- KKEC-S4 (2no.) - End cap pair (Mat black)
- KKEC-S5 (2no.) - End cap pair (Bronze)



Black tape (prevents light leak)